

Scanner Type Grain Analyzer for Color and Shape

# GRAIN SCANNER

RSQI 10A



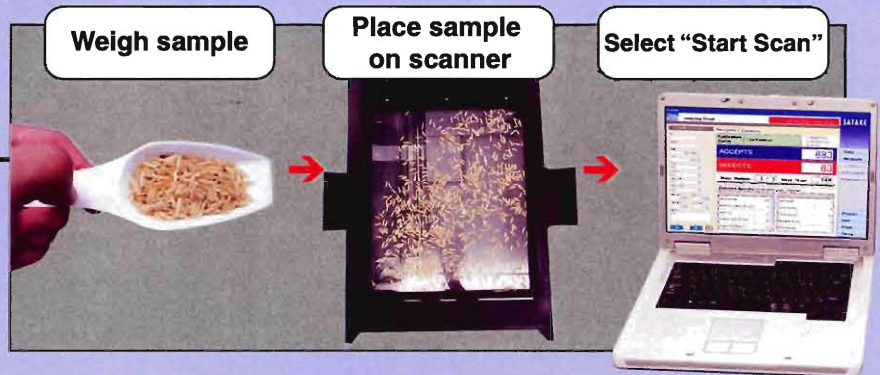
# Quick determine the quality of many types of grain by analyzing color and shape

Easy to operate ! Simple, Quick, Convenient !

## FEATURES:

### 1. No Special Skilled Required

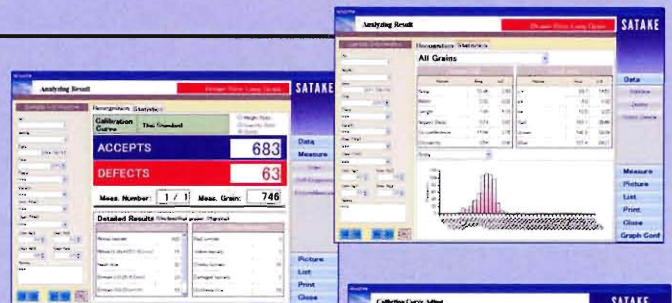
Place your sample grains on the tray, and click of "Start Scan". The data shows up in moments.



### 2. Quick Color and Shape Measurement

Up to 1,000 grains can be measured in 60 seconds.

- Shape and color information of every individual grain is available after 60 seconds, including images and graphs.
- Statistical data for entire sample is also displayed, including histograms and average values.



### 3. Customers' Measurement Setting

Measurement settings can be changed to meet your needs.

- User can set user's own definition of whether grains' shape or color are judged as good or bad.
- Users can activate or deactivate judgment criteria as needed.



## Specifications

Model	RSQ110A
Testable Materials	Rice (Short or Long Grain / Brown or White Rice), Beans, Wheat, Maize and Other Grains
Imaging Method	Light Source : LED (White) / Sensor : CCD (Color)
Measuring Speed	1000 grains /60 seconds (Rice)
Test Criteria	Users' own setting for criteria
Printing	Small portable printer included (Full size printing possible with users' printer)
Accessories	Material tray, Background plate, Measuring cup, Brush, Calibration Plates, Tweezers, etc.

\*Software and manuals for the machine can be downloaded through at SATAKE's Homepage. Internet connection required.

The image processing technology used in this equipment has been provided by Yoshinari Morio, an associate professor at Mie University.

⚠ Machine design and specification may be revised without notice for the improvement purpose.

All Satake products are the subject of continuous development and, as a result, their specification may change and differ in detail from those shown.

## SATAKE CORPORATION

**Head Office**  
2-30 Saijo Nishihonmachi,  
Higashi-Hiroshima-shi,  
Hiroshima-ken, 739-8602, Japan  
Tel : +81-82-420-8560/8539  
Fax : +81-82-420-0865  
e-mail : international@satake-japan.co.jp  
URL : www.satake-japan.co.jp

**SATAKE USA INC.**  
10905 Cash Road,  
Stafford, Texas, 77477, U.S.A.  
Tel : +1-281-276-3600  
Fax : +1-281-494-1460  
e-mail : rice@satake-usa.com  
URL : www.satake-usa.com

**SATAKE (CANADA) INC.**  
5100 Fallingbrook Drive,  
Mississauga, Ontario, L5V 1S7,  
Canada  
Tel : +1-905-858-0791  
Fax : +1-905-858-0957  
e-mail : sales@satake-canada.com

**SATAKE AMERICA LATINA LTDA.**  
Rua Xavantes, 155-Pav. 20,  
Bairro Atradores, CEP  
89203-210, Joinville, Santa  
Catarina, Brazil  
Tel : +55-47-3461-1313  
Fax : +55-47-3461-1300  
e-mail : ricardo@satake.com.br

**SATAKE EUROPE LTD.**  
P.O. Box 53, Horsfield Way,  
Bredbury Industrial Park, Bredbury,  
Stockport, Cheshire, SK6 2FG, U.K.  
Tel : +44-161-406-3800  
Fax : +44-161-406-3801  
e-mail : sales@satake-europe.com  
URL : www.satake-europe.com

SATAKE CORPORATION has obtained ISO 9001 and ISO 14001 certification. These international standards for management systems ensure Satake will continue to provide high quality products and services.

**SATAKE INDIA ENGINEERING PVT. LTD.**  
4th Floor, Tower-1, HB Twin Towers,  
A2, 3, 4, Netaji Subhash Place,  
Wazirpur District Centre, New  
Delhi, 110034, India  
Tel : +91-11-4706-2626  
Fax : +91-11-4706-2624  
e-mail : satake@del2.vsnl.net.in

**SATAKE (THAILAND) CO., LTD.**  
133 Moo 5, Bangkadi Industrial  
Park, Tivanon Road, Pathumthani,  
12000, Thailand  
Tel : +66-2-501-1180  
Fax : +66-2-501-1188  
e-mail : sataketh@asia.com  
URL : http://www.sataketh.com/

**SATAKE INTERNATIONAL BANGKOK CO., LTD.**  
888/84 Mahatun Plaza Bld., 8th  
Floor, Ploenchit Rd., Lumpini,  
Pathumwan, Bangkok, 10330,  
Thailand  
Tel : +66-2-651-5845  
Fax : +66-2-651-5848  
e-mail : sataketh@asia.com

**SATAKE MANUFACTURING (SUZHOU) CO., LTD.**  
229 Jin Feng Road, Suzhou New  
District, Suzhou, Jiangsu Province,  
215129, China  
Tel : +86-512-6536-8225  
Fax : +86-512-6536-5922  
e-mail : satake@satake.cn

**SATAKE AUSTRALIA PTY. LTD.**  
15 Leland Street, Penrith, N.S.W.,  
2750, Australia  
Tel : +61-2-4725-2600  
Fax : +61-2-4725-2601  
e-mail : info@satake.com.au  
URL : www.satake.com.au

ISO 9001 Certification  
(Quality Management Systems)  
ISO 14001 Certification  
(Environmental Management Systems)